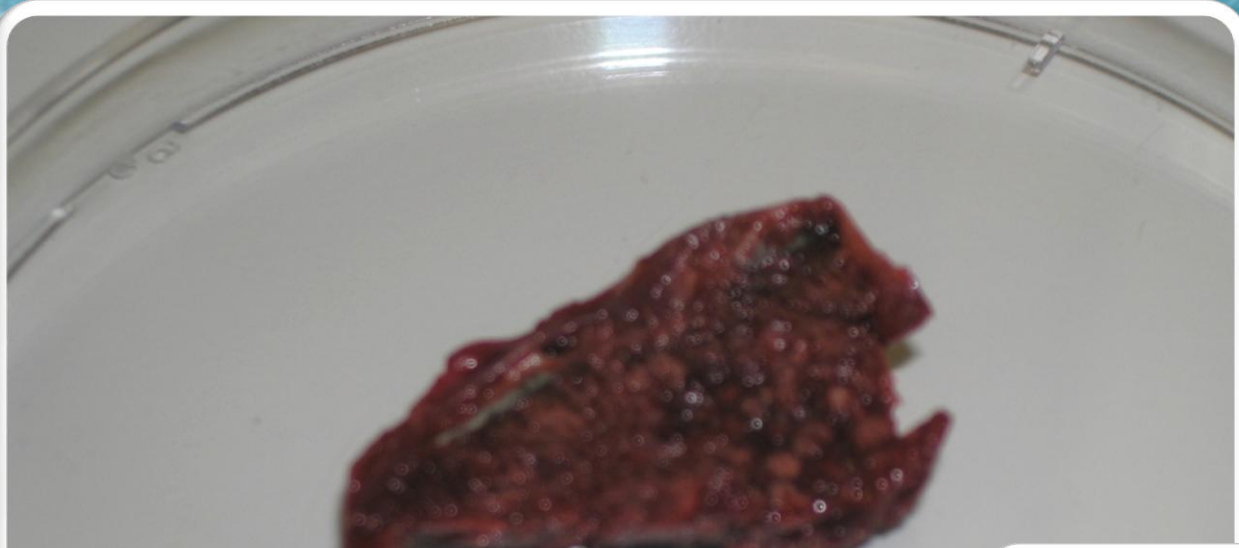


A microscopic image showing a dense field of Aspergillus hyphae. The hyphae are long, thin, and branching, with a distinct central canal. They are stained a light blue color. The background is a darker, textured blue. The text 'ASPERGILOSIS EN GALLINAS' is overlaid in the center in a dark blue, sans-serif font.

ASPERGILOSIS EN GALLINAS



Begoña Acosta Hernández
ULPGC





Begoña Acosta Hernández
ULPGC





Begoña Acosta Hernández
ULPGC